



INDUSTRIAL AUTOMATION

SINGLE NOZZLE COIL MARKER

The continuous writing coil marker (applicable for hot as well as cold coil purposes) has been designed around a standard robot for extreme mechanical reliability and high speed marking. Tebulo robots have been in operation in mills around the world for many years and have proven to be reliable in tough conditions.

The robot, in combination with a special paint spray nozzle and heat resistant shielding, uses nontoxic, anti-clogging paint to provide a reliable mark for hot and cold coils. The coil marker measures the size of the coil and writes the characters in a bow or straight line at the flat face (sidewall) in one or more lines and/or on the circumference of the coil in one or more lines.

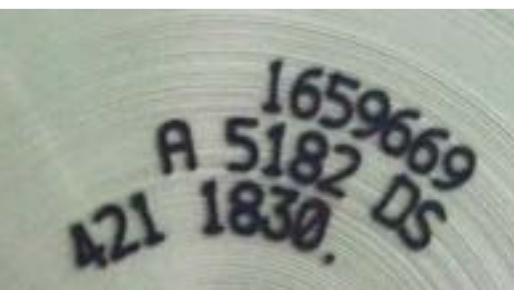
FEATURES:

- Full automatic marking
- No intermediate cleaning by blowing solvent in the open air between each marking cycle
- Flexible operation by using a standard robot
- Fully programmable
- Nontoxic, non-clogging paint
- Paint level indication and warning
- Easy installation integration in existing and new production lines
- Low maintenance costs

SINGLE NOZZLE COIL MARKER

Standard Specifications

Measuring time	16 sec
Character writing time	1.0 sec per character
Coil diameter	up to 2,700 mm (106 inches)
Coil width	up to 2,200 mm (87 inches)
Total weight marker	2,700 kg (5952 lbs)
Control	Robot control PLC
Communication	Ethernet/Profibus DP
Communication protocol	Any standard
Max. coil surface temperature	950°C (1742°F)
Paint colour	White
Character height	50 to 120mm (2 to 5 inches) depending on coil size
Overall height	2,250 mm (89 inches)
Overall length	3,200 mm (126 inches)
Overall depth	2,700 mm (106 inches)
Power consumption	13 kW
Supply voltage	Any standard



Additional Options:

- 7 x 5 Dot matrix marker (7 nozzles)
- Coil position with:
 - eye to the sky
 - perpendicular to the transport direction
- Heat proof label attachment
- PC in the operator pulpit
- Cold coil application
- Other paint colours on request
- Multiple PLC options